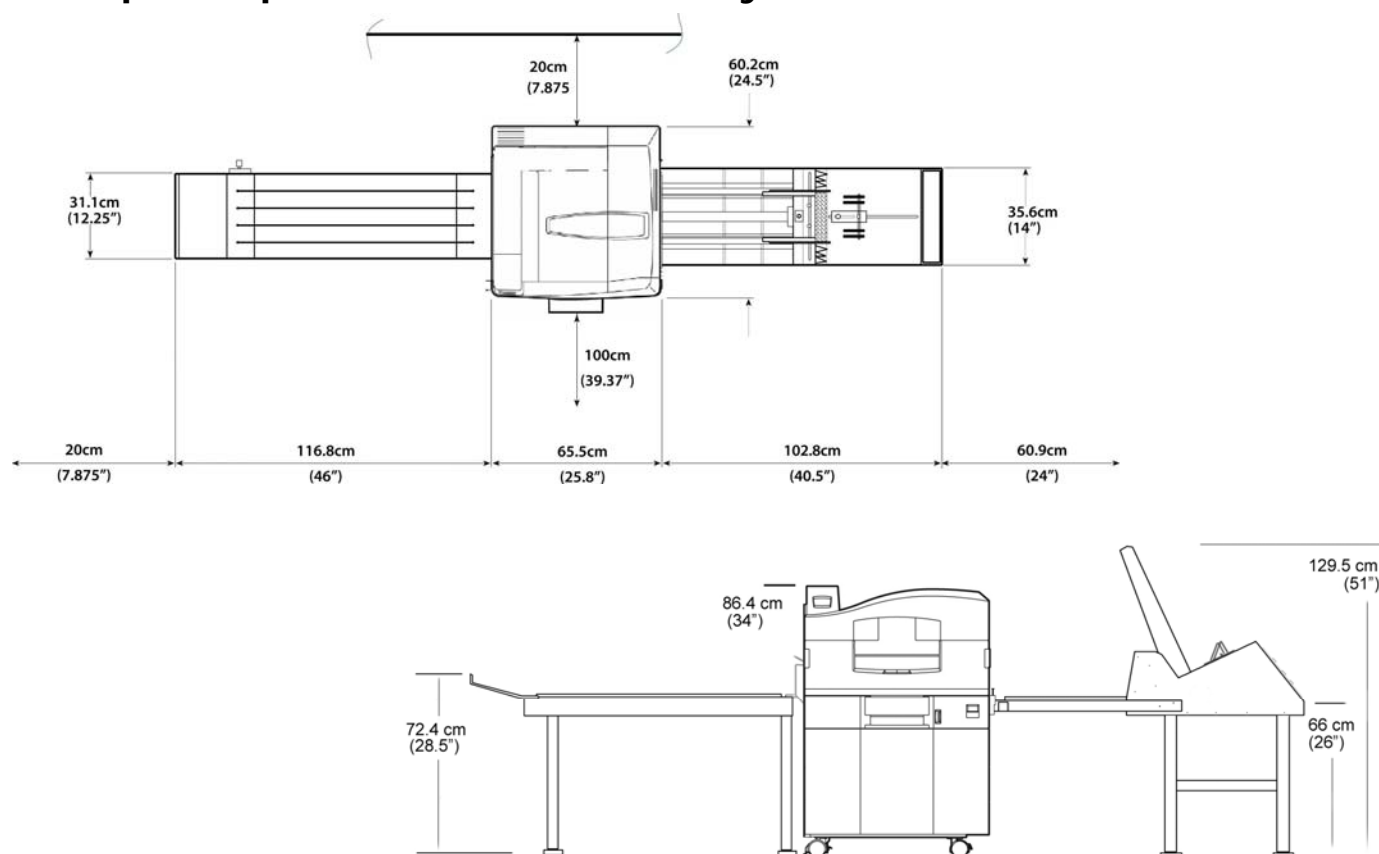


pro900DP Site Planning

1. Space for Palletized system (storage)

| | |
|--|---|
| Packaged Size (complete system on skid) | 55 in. x 62 in. x 35 in. (w x d x h) |
| Packaged Weight (complete system on skid) | 530 lb. (240.4 kg) |

2. Adequate space for the installed system



3. Network port in close proximity to the installed system

| | |
|--|---|
| Network Interface (Required if using Fiery tools) | 1000BASE-T/100BASE-TX/10BASE-T (standard) - TCP/IP, EtherTalk - LPR, Port9100, IPP, SMB, PAP Network cables must be supplied by site (not included with system) |
|--|---|

4. AC Power in close proximity to the installed system

| | |
|--|--|
| Current Ratings (110V) Feeder Conveyor | 110-127V 50/60Hz 10A 115V 50/60Hz 3A 115V 50/60Hz 1A |
| Current Ratings (230V) Feeder Conveyor | 220-240V 50/60Hz 6A 230V 50/60Hz 1A 230V 50/60Hz 1A |
| AC Cord Rating | 110V (US Type) 15A non-shielded (for printer) All AC cords included with system 240V (European Type) 15A non-shielded (for printer) All AC cords included with system |
| Outlet Requirements | 3 – 3 prong receptacles or 20A Commercial Power Strip – to be supplied by site |

5. PC/Mac (Fiery system and drivers)

| | |
|-------------------------|---|
| PC System Requirements | Processor P4, 1GHz or faster 1Gb or more of RAM 3GB or more of Hard Disk Drive free space 1024x768 display / 16bit video card Windows XP, Vista, Windows7 |
| Mac System Requirements | Processor PPC G5 or multicore Intel 1Gb or more of RAM 3GB or more of Hard Disk Drive free space 1024x768 display / 16bit video card Mac OSX v10.4.9, 10.5 and 10.6 |

Additional specifications ...

| | | |
|--|--|---|
| Temp–Operating | 10 - 32° C | 50 - 90° F |
| Humidity–Operating | 20 – 80 %RH | |
| Temp Non–Operating | 0 – 43° C | 32 – 110° F |
| Humidity–Non-Operating | 10 – 90 %RH | |
| Color Print Quality Assured | 17 – 27° C 50 – 70 %RH | 62.6 – 80.6° F 50 – 70 %RH |
| 120V AC Input/Frequency | 99 – 140 VAC | 60 HZ +/-2% |
| 230V AC Input/Frequency | 198 – 264 VAC | 50 HZ +/-2% |
| Power Consumption–Operating | 1980 W | Max. |
| Noise Level–Operating | Within 54 dBA | |
| Noise Level–PowerSave | Within 28 dBA | |
| Physical Size Printer Feeder Conveyor | 654.5 mm x 623 mm x 471 mm 25.8 in x 24.5 in x 34" in (w x d x h) Feeder 40.5" x 17" x 51" Conveyor 46" x 14.5" x 30" | |
| Weight (system) | 152 lbs (printer and supplies) 105 lbs (feeder and stand) 45 lbs (conveyor) TBD lbs (stand) 302 + TBD lbs (system total) | 69 kg 48 kg 20 kg 137 + TBD kg |
| Levelness | Any deviation from horizontal position should be within 50mm between both sides of the printer | |