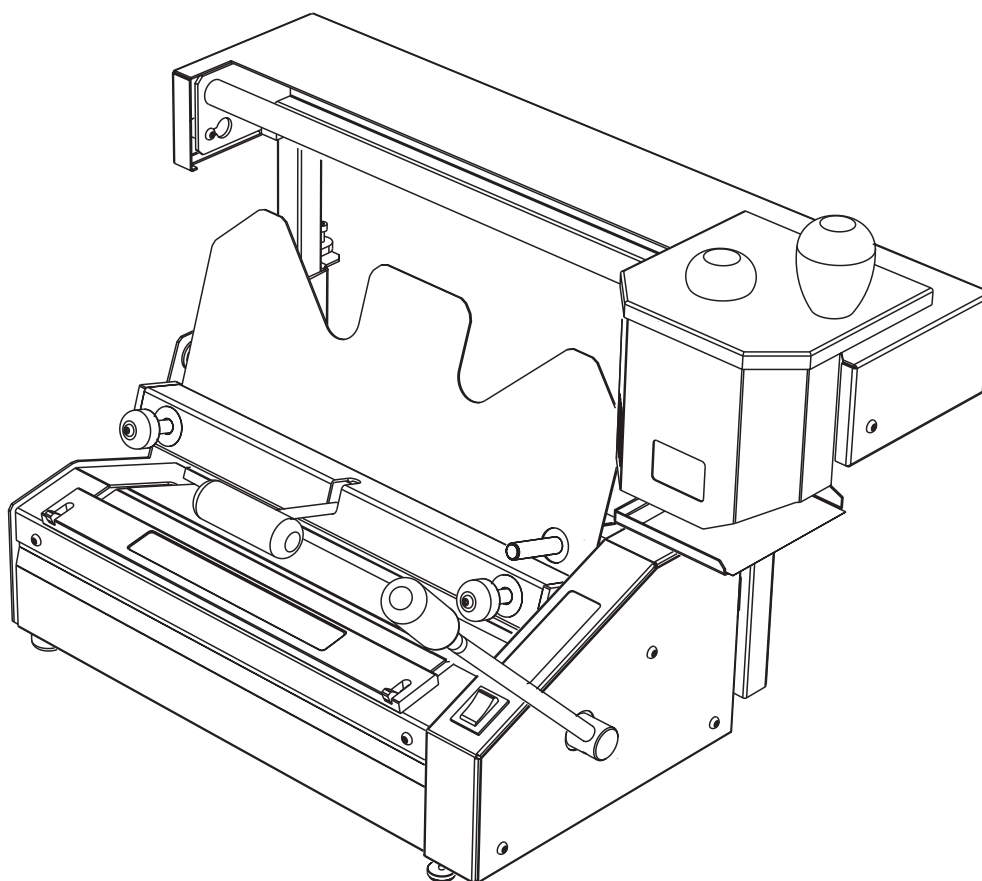


FASTBIND SECURA

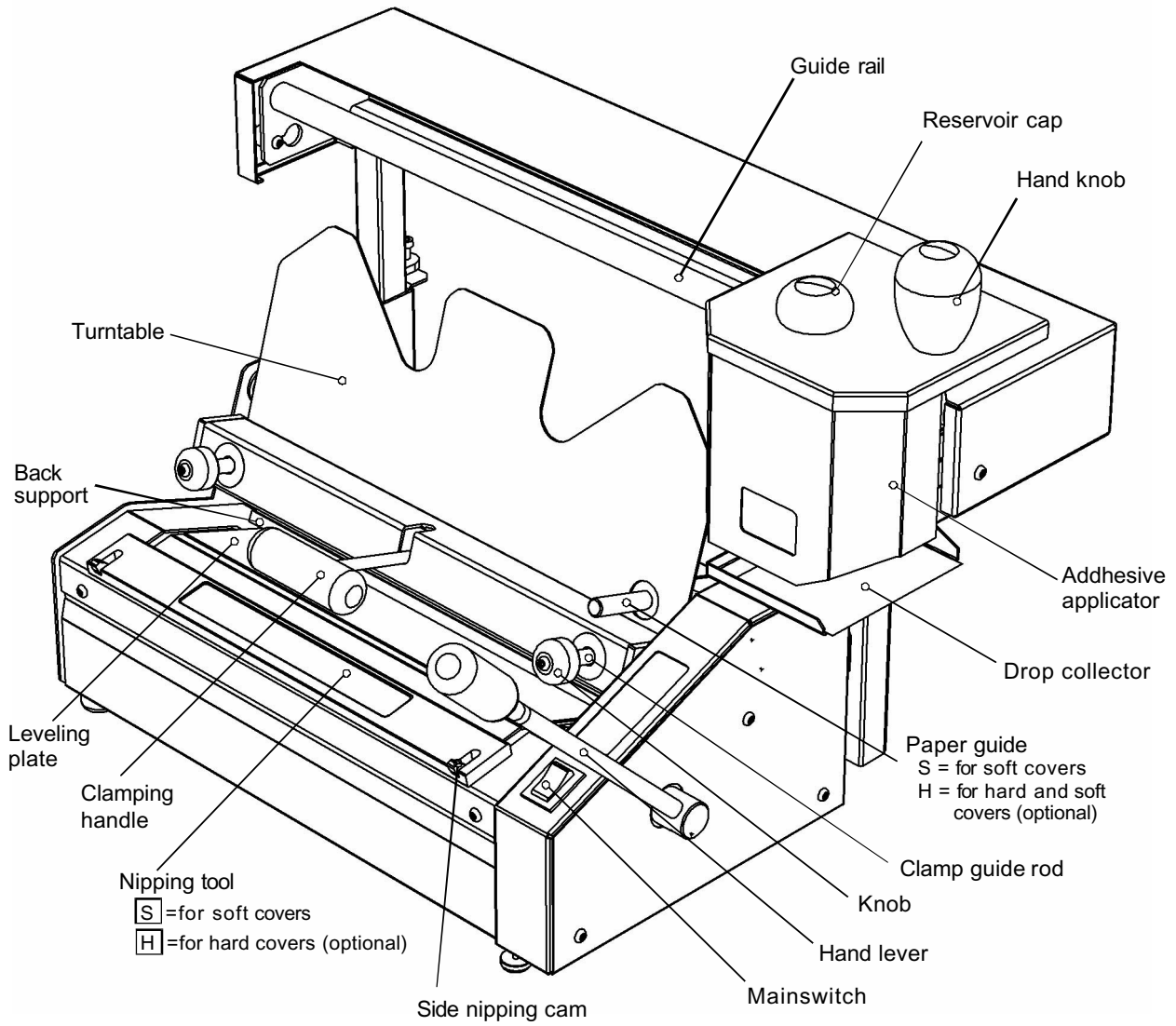
HOT-MELT BOOKBINDING MACHINE

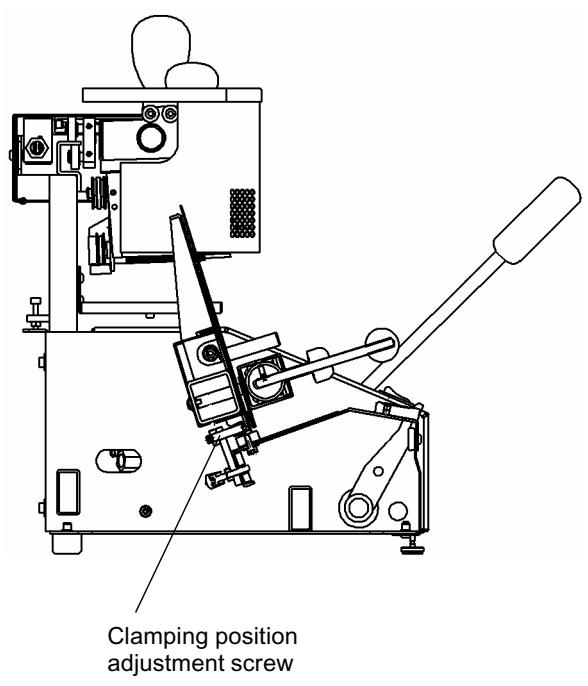
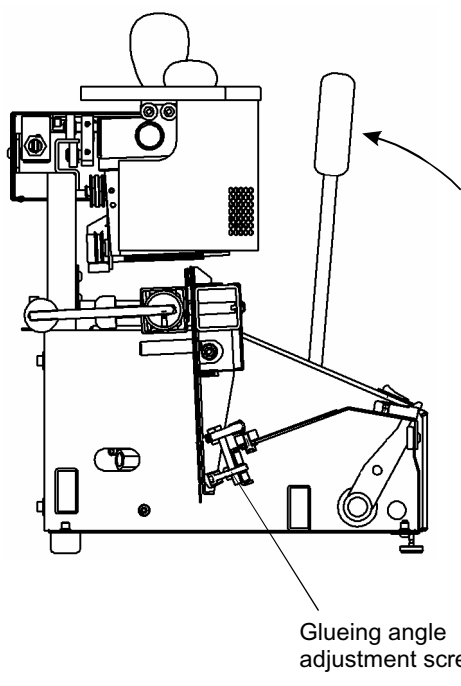
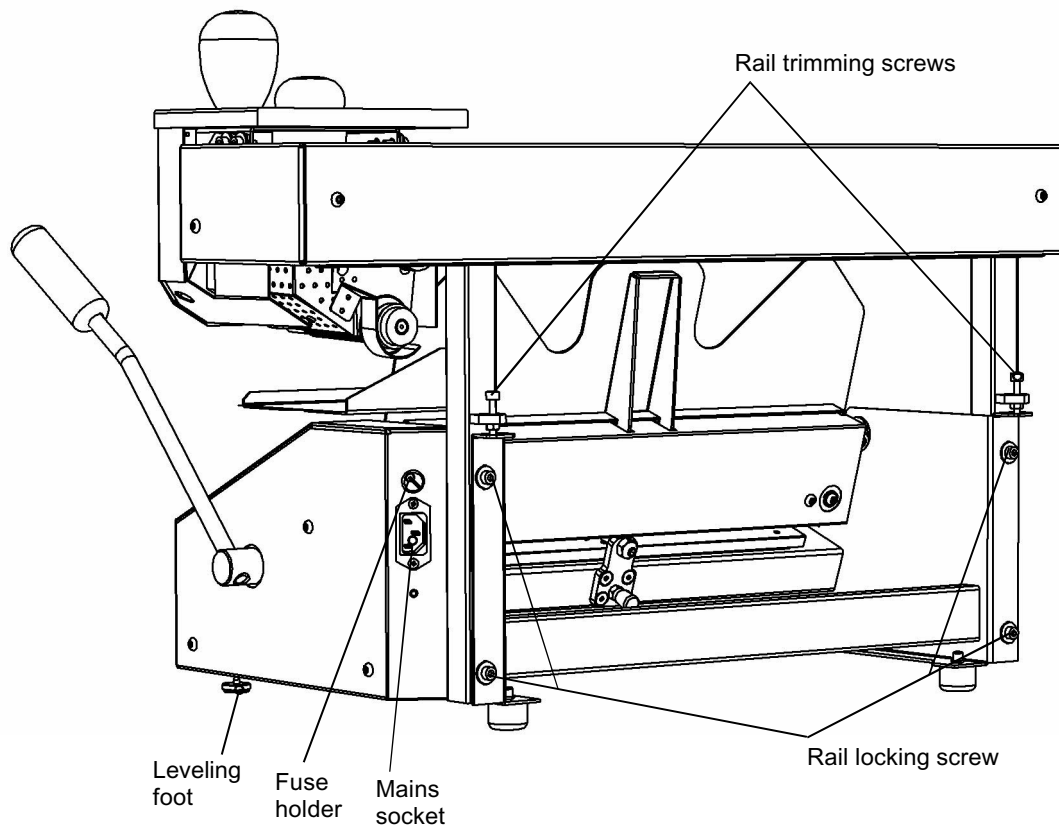
SPARE PARTS 6 / 2011



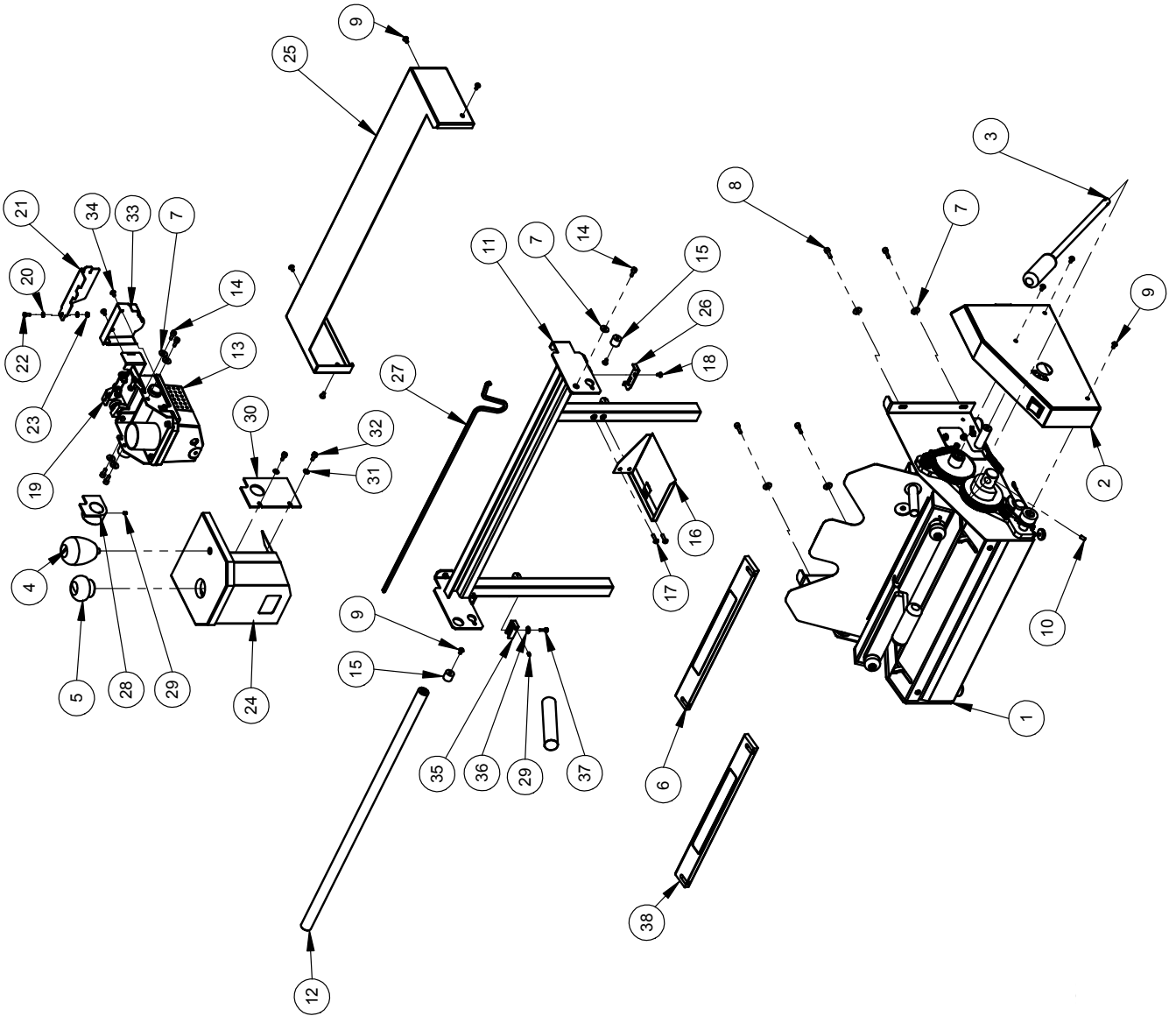
CONTENTS:

<u>Description</u>	<u>Page</u>
Main Parts and Controls	11-01
Controls and Adjustments	11-02
Main Assembly.....	11-03
Clamp	11-04
Adhesive Applicator.....	11-05
Adhesive applicator detail	11-06
Body and Turntable	11-07
Chain Conversion Kit Installation...	11-08
Wiring diagram	11-91





ITEM NO.	ID	Version	Name	QTY.
1	3707	a5	Secura body and turntable assembly	1
2	3754	a2	Connection box assembly	1
3	0573	a2	Hand lever	1
4	4544	a3	Hand knob	1
5	0566	b3	Reservoir cap	1
6	0641	a2	Nipping plate "S" assy	1
7	1802	STD	Washer M5	9
8	1809	STD	Hexagon socket screw M5x16	4
9	1816	STD	Panel screw M5x8	9
10	1843	STD	Retaining screw M6	1
11	0690	a4	Rail KP	1
12	0600	a3	Rail guide	1
13	5345	a3	Adhesive applicator	1
14	1808	STD	Hex socket screw M5x12	5
15	0603	a3	Spacer sleeve	2
16	0638	a3	Drop collector assembly	1
17	1814	STD	Panel screw M5x16	2
18	2267	STD	Screw M4x6	1
19	3733	a4	Electric box	1
20	1821	STD	Serrated washer 4 mm	3
21	3734	a3	Cover	1
22	3403	STD	Hex socket screw M4x10	1
23	1828	STD	Hexagon nut M4	1
24	4163	a2	Applicator housing	1
25	0491	c4	Rail housing	1
26	13573	a1	Chain bracket	1
27	5348	STD	Chain 6 mm L=666	1
28	4348	a2	Thermal protector	1
29	3668	STD	Retaining screw M5x6	2
30	4162	a3	Thermal protector	1
31	2317	STD	Washer -A M5	2
32	5101	STD	Hex socket screw M5	2
33	3757	a2	Chain guard	1
34	1812	STD	Panel screw M4x8	2
35	13574	a1	Chain bracket	1
36	1801	STD	Washer 4 mm	1
37	6511	STD	Hex socket screw M4x12	1
38	0643	a2	Nipping plate "H" assy	1

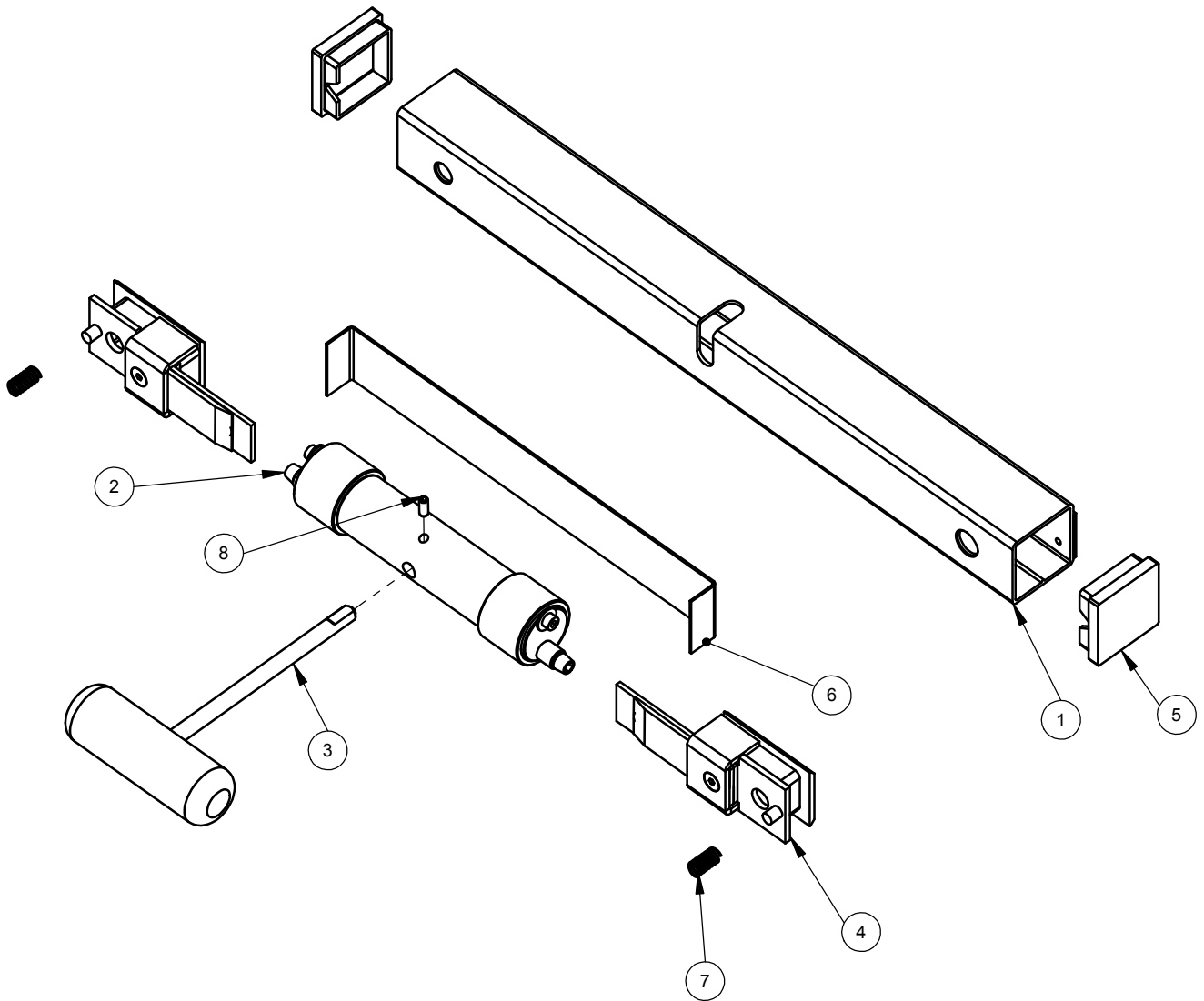


www.fastbind.com

© Mapping Co 2011. All rights reserved.

11-03

MAIN ASSEMBLY



ITEM NO.	ID	Versio	Name	QTY.
1	0682	a3	Clamp pipe assembly	1
2	0416	a3	Rotary unit	1
3	0636	b2	Clamp handle	1
4	0974	a8	Locking unit 21	2
5	3712	STD	Plug	2
6	0830	a2	Fitting plate	1
7	2508	a1	Spring	2
8	3543	STD	Retaining screw M5x10	1

© Maping Co 2011. All rights reserved.



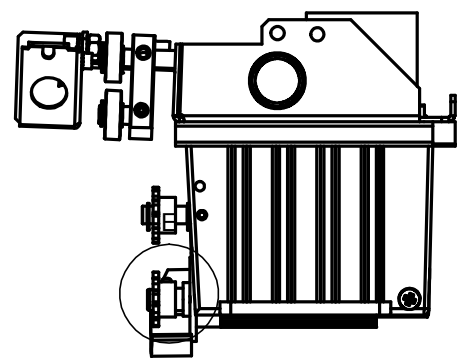
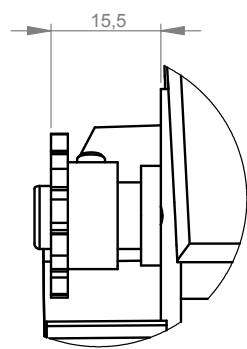
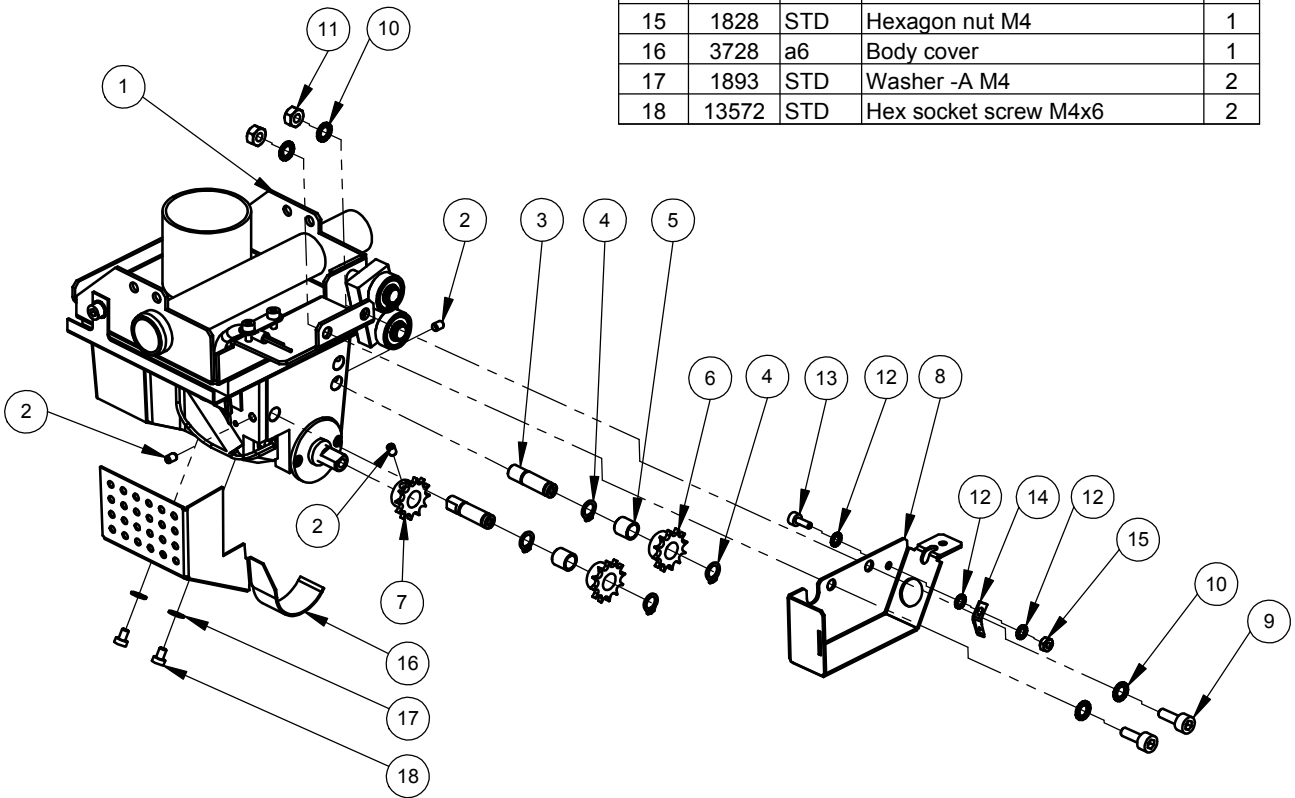
www.fastbind.com

© Maping Co 2011. All rights reserved.

11-04

CLAMP

ITEM NO.	ID	Versio	Name	QTY.
1	5342	a4	Adhesive applicator pre-assembly	1
2	3668	STD	Retaining screw M5x6	3
3	4167	a1	Turn wheel pin M06	2
4	2322	STD	Retaining ring d8	4
5	2166	STD	Sliding bearing	2
6	1163	a1	Turning chain wheel	2
7	1173	a2	Driving chain wheel	1
8	3733	a4	Electric box	1
9	3744	STD	Hex socket screw M6	2
10	1823	STD	Serrated washer 6 mm	4
11	1830	STD	Hexagon nut M6	2
12	1821	STD	Serrated washer 4 mm	3
13	3403	STD	Hex socket screw M4x10	1
14	3713	STD	Ground connector	1
15	1828	STD	Hexagon nut M4	1
16	3728	a6	Body cover	1
17	1893	STD	Washer -A M4	2
18	13572	STD	Hex socket screw M4x6	2



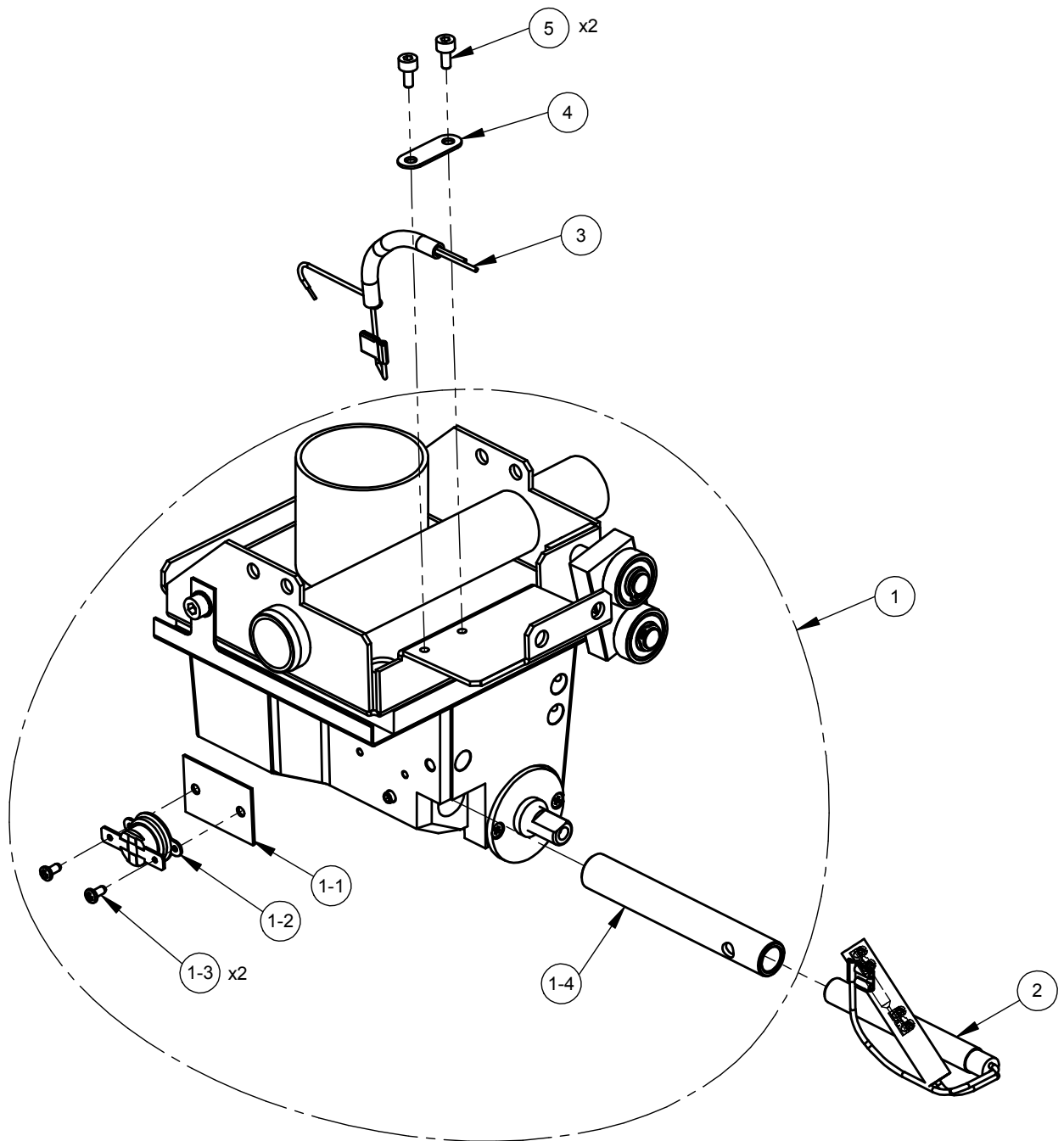
5345a3 Adhesive applicator



www.fastbind.com
 © Maping Co 2011. All rights reserved.

11-05

ADHESIVE APPLICATOR



ITEM NO.	ID	Versio	Name	QTY.
1	4166	a3	Adhesive applicator	1
2	26162	a1	Thermal resistor assembly	1
3	3788	a1	Cable set	1
4	3529	a2	Clamp	1
5	2236	STD	Hex socket screw M4x8	2
1-1	4168	a1	Insulation plate	1
1-2	4169	STD	Normal thermostat	1
1-3	2213	STD	DIN7981 2.9x6.5 ZN Screw	2
1-4	0674	a2	Resistor tube	1

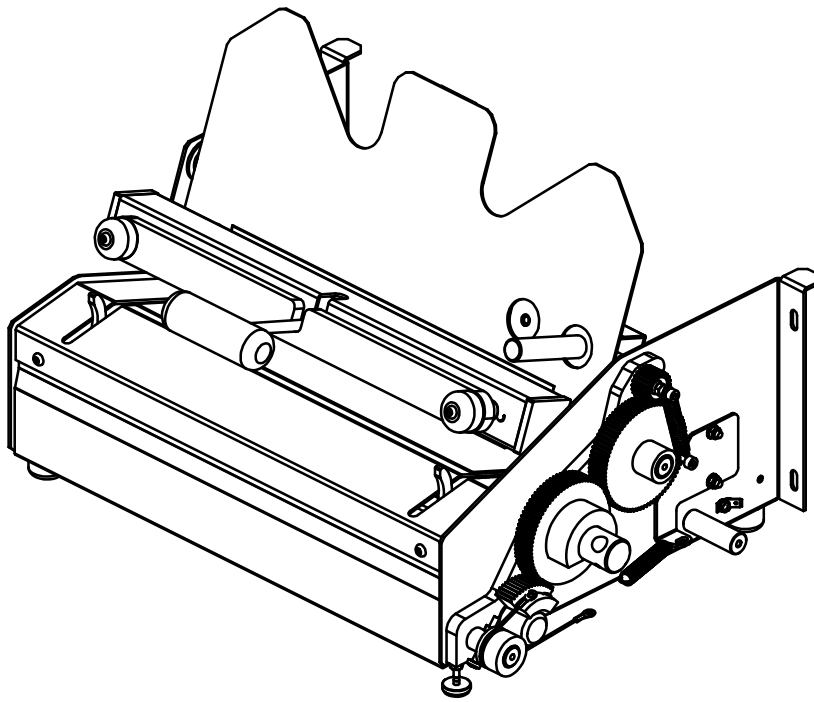


www.fastbind.com

© Maping Co 2011. All rights reserved.

11-06

ADHESIVE APPLICATOR



ITEM NO.	ID	Versio	Name	QTY.	ITEM NO.	ID	Versio	Name	QTY.
1	0587	b4	Body	1	29	1839	STD	Hex socket screw M6x25	1
2	0639	a3	Turntable shaft assy	1	30	1830	STD	Hexagon nut M6	1
3	0615	a2	Bearing	2	31	1802	STD	Washer M5	6
4	0688	a5	Table assembly	1	32	1808	STD	Hex socket screw M5x12	3
5	0568	b4	Adjustable support	1	33	1800	STD	Retaining screw 8x10	2
6	0612	a3	Clamp	1	34	0484	c3	Table's back plate	1
7	0581	a3	Spur gear no.3	1	35	1812	STD	Panel screw M4x8	2
8	0575	a2	Spur wheel no.1	1	36	3668	STD	Retaining screw M5x6	2
9	1826	STD	Washer -A M16	1	37	2385	a1	Pull spring	1
10	0538	a1	Spur wheel no.2	1	38	0602	a2	Pivot shaft	1
11	1831	STD	Parallel key	1	39	1841	STD	End plug	2
12	1832	STD	Sleeve 25 mm	1	44	1919	STD	Shimming washer 14x20x1,5	2
13	0580	c1	Pulley	1	45	1849	STD	Screw M3x6	1
14	3563	a1	Spring XT clamp	1	46	0625	a1	Retraction cable	1
15	1829	STD	Hexagon nut M5	4	49	0595	b2	Clamp guide rod (L=140)	2
16	1810	STD	Hex socket screw M5x20	5	50	2233	STD	Spring washer B 6.1	2
17	2270	STD	Screw M5x35	1	51	1817	STD	Panel screw M6x10	2
19	0471	b4	Nipping cam	1	52	2509	a3	Clamp assembly	1
20	2315	STD	Rubber foot	3	53	0771	a1	Guide support assy	1
21	2235	STD	Screw M5x25	1	54	0564	b2	Knob	2
22	0658	a1	Cushion gum	1	55	1815	STD	Panel screw M5x30	2
23	1842	STD	Hex socket screw M5x16	4	56	0557	a2	Front cover	1
24	2253	STD	Hexagon nut M8	1	58	1814	STD	Panel screw M5x16	4
25	1840	STD	Retaining screw M8x35	1	59	0616	a4	Cup sleeve	1
26	3667	STD	U-plug	2	64	0628	a2	Support sleeve	1
27	0558	a2	Plate	1	65	3645	a1	Softcover paperguide	1
28	0493	a1	Bar	1	66	3649	a2	Hardcover paper guide	1

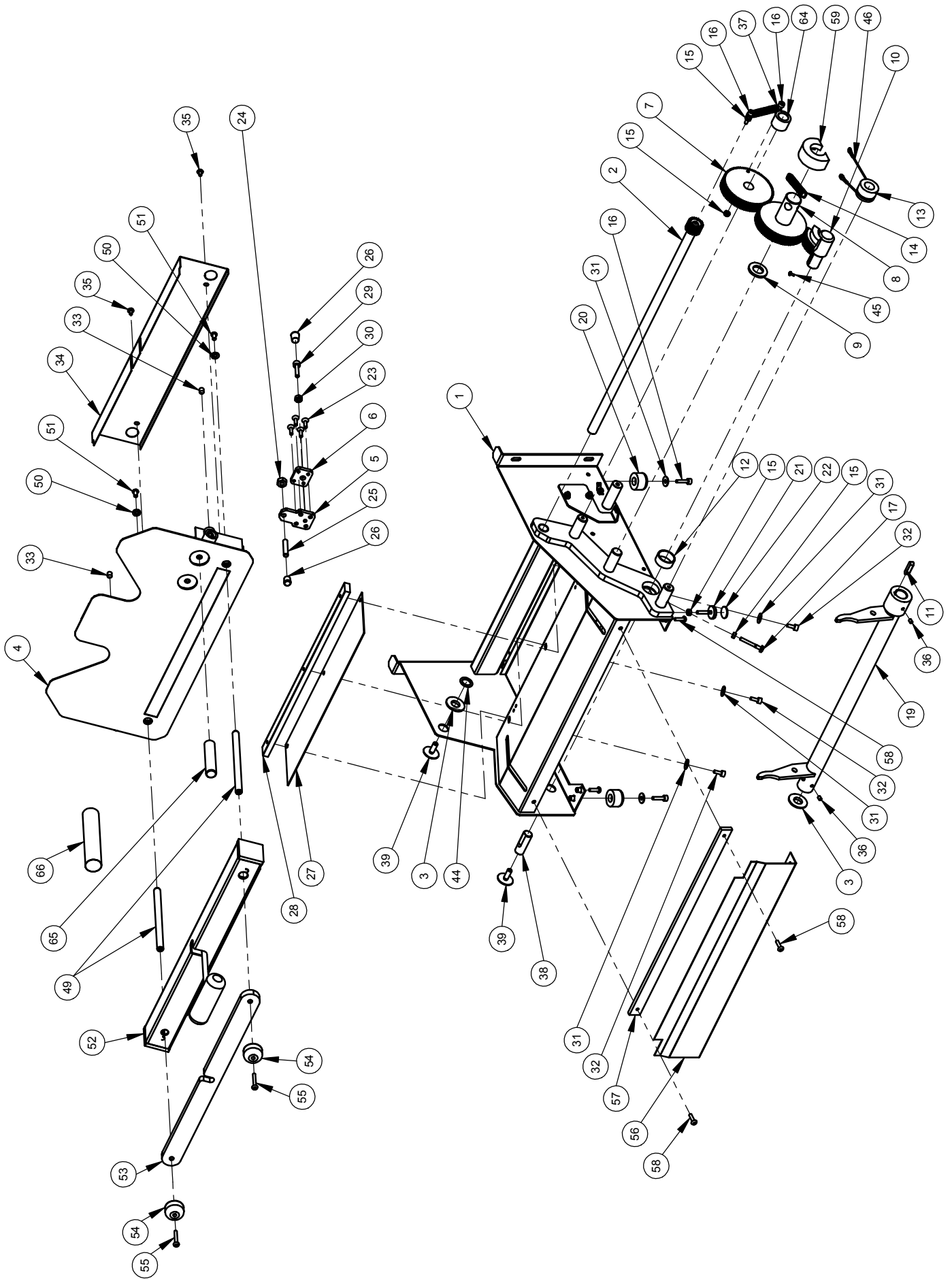


www.fastbind.com

© Mapping Co 2011. All rights reserved.

11-07

BODY AND TURNTABLE



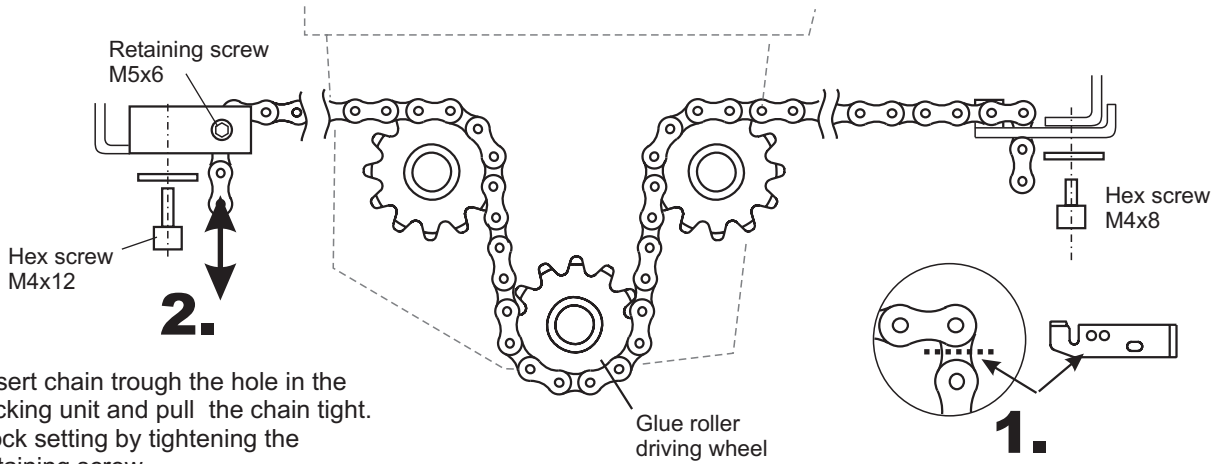
www.fastbind.com

© Maping Co 2011. All rights reserved.

11-07

BODY AND TURNTABLE

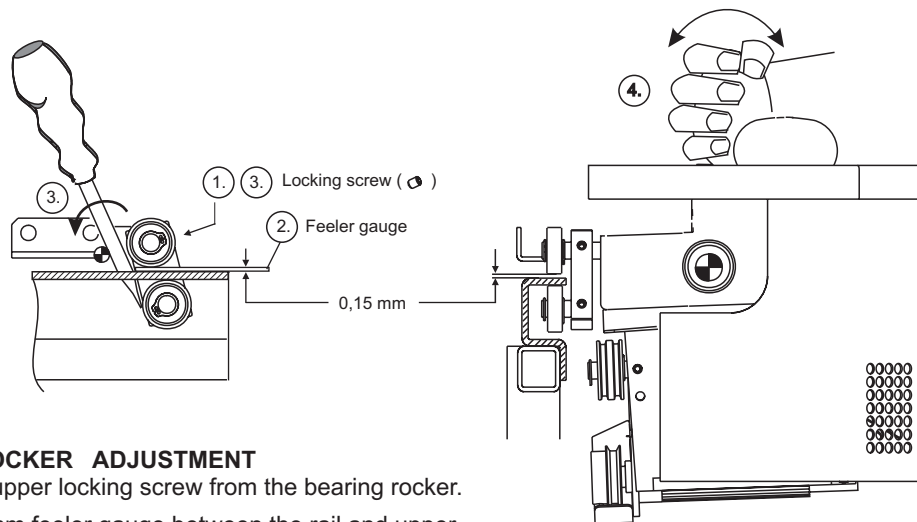
SECURA WIRE TO CHAIN CONVERSION KIT 2011 (Part number: 26161a1)
 16.6.2011 revised version / new chain locking units



Insert chain trough the hole in the locking unit and pull the chain tight. Lock setting by tightening the retaining screw.

Note: chain is too tight if it makes "snapping" sound. Too loose chain can skip teeth.

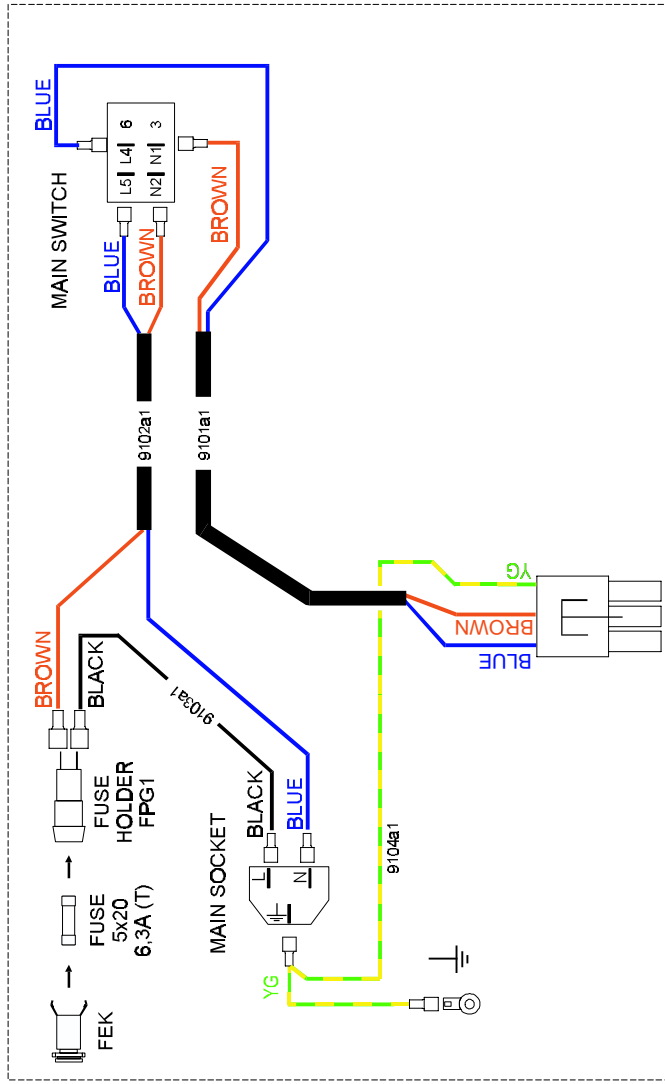
Place this thin section through the slot to lock the chain. Tighten screw to fasten the part.



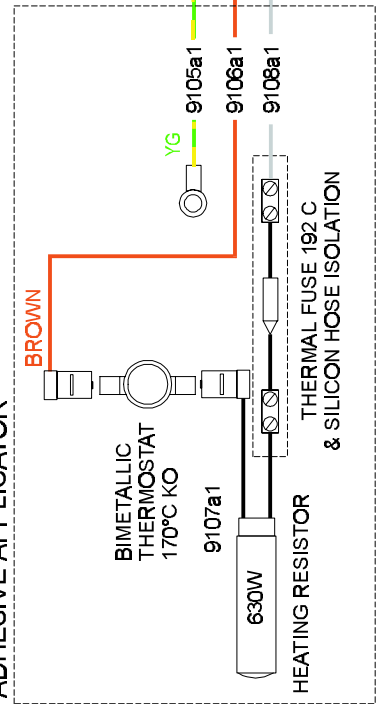
BEARING ROCKER ADJUSTMENT

1. Loosen the upper locking screw from the bearing rocker.
2. Insert 0,10 mm feeler gauge between the rail and upper ball bearing.
3. Use a screwdriver to lever the bearing rocker and tighten the locking screw (6 Nm torque).
4. Check adjustment by moving the adhesive applicator. When adjusted correctly, it runs smoothly and no gap can be felt.

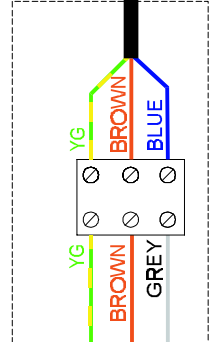
GEAR BOX HOUSING



ADHESIVE APPLICATOR



CONNECTION BOX



MACHINE BODY

